

# Wolfe Cottage

213 WRITER'S WAY

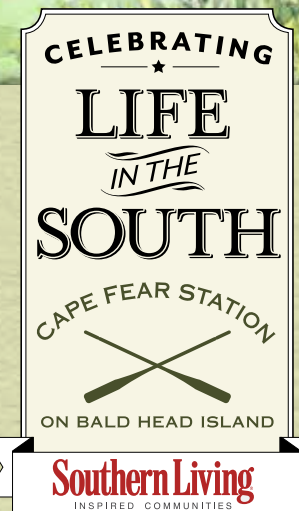


## *At Cape Fear Station on Bald Head Island,*

a new *Southern Living* Inspired Community is emerging. Located just a stone's throw from The Common and the Atlantic Ocean, a select group of homes designed by renowned Southern architects is now available for sale, including the charming Wolfe Cottage at 213 Writer's Way.

Hand-picked by the magazine's editors, *Southern Living* Inspired Communities embrace the natural beauty of the Southern landscape, display the best of *Southern Living* inspired architecture, and contain environments that foster communal gatherings. Cape Fear Station joins a handful of elite communities that hold this designation.

The neighborhood's lead builder is Whitney Blair Custom Homes, winner of the 2016 *Southern Living* Builder of the Year award. To learn more about this exciting new development at Cape Fear Station, contact Bald Head Island Limited Real Estate Sales today.



**WB** WHITNEY BLAIR  
CUSTOM HOMES



**BALD HEAD ISLAND LIMITED**  
REAL ESTATE SALES



800-888-3707 | [salesinternet@bhisland.com](mailto:salesinternet@bhisland.com) | [www.BHIREalEstate.com/InspiredCommunity](http://www.BHIREalEstate.com/InspiredCommunity)

# 213 WRITER'S WAY HOME DETAILS

Approx. 1,732 heated square feet | 3 Bedrooms, 2 -1/2 Baths

## INTERIOR

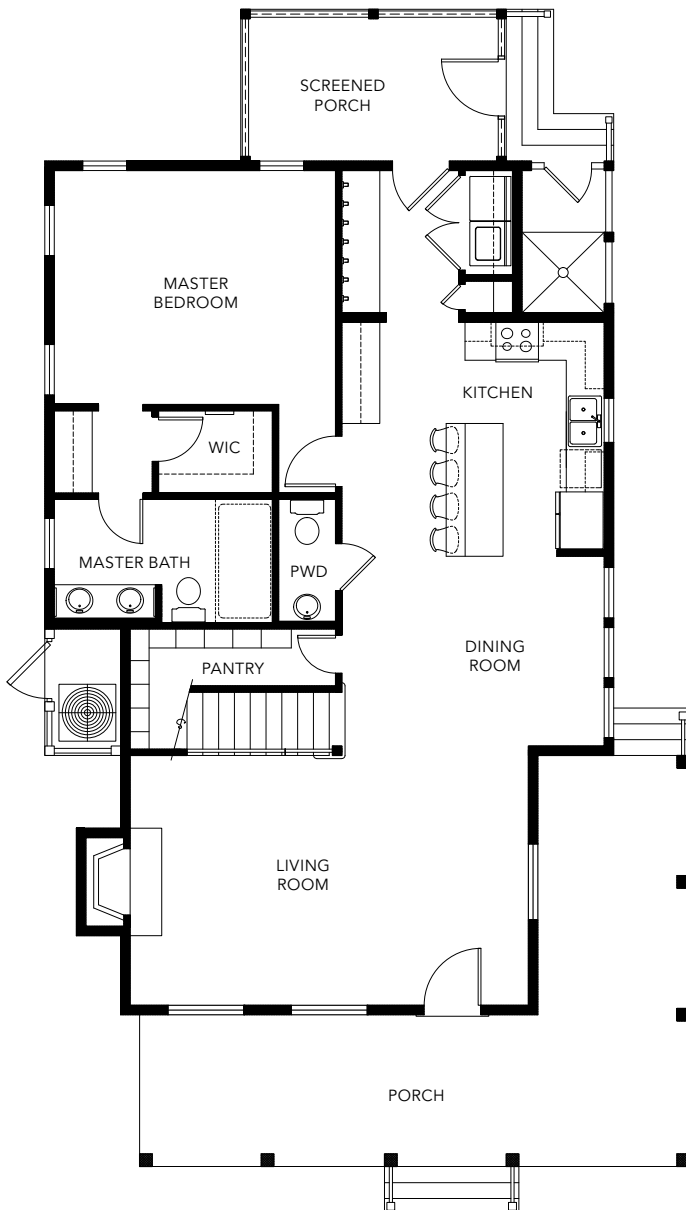
- 10' ceilings in main living space on first floor, 10' vaulted ceilings on second floor, 8' solid core interior doors on both floors
- 3 1/4" random length #2 grade white oak flooring in downstairs living areas and kitchen, downstairs master bedroom, and upstairs bedrooms and sleeping porch
- Ship-lap wainscoting in living and dining rooms
- Beadboard in utility/laundry room
- Custom cabinetry in kitchen and all baths
- Quartz counter tops in kitchen and baths
- Designer tile in master bath floor and shower, secondary bathroom floors and tub/shower and utility/laundry room floor
- GE Cafe Series stainless steel appliances
- Delta plumbing fixtures in chrome in all baths

- Designer lighting throughout home

## EXTERIOR

- Hardie trim and siding
- Pella 350 Series Low-E glass single hung windows with hurricane impact glass
- Aluminum standing seam metal roof
- Copper flashing
- Exposed rafter tails
- Full wrap-around porch, screened porch and a sleeping porch
- Tongue and groove porch ceilings
- Cart garage
- Outdoor shower

FIRST FLOOR PLAN



SECOND FLOOR PLAN

