

# Williams Cottage

212 WRITER'S WAY

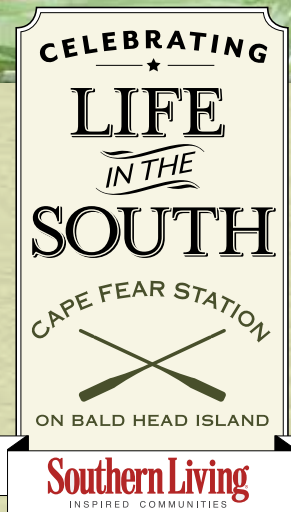


## *At Cape Fear Station on Bald Head Island,*

a new *Southern Living* Inspired Community is emerging. Located just a stone's throw from The Common and the Atlantic Ocean, a select group of homes designed by renowned Southern architects is now available for sale, including the beautiful home at 212 Writer's Way.

Hand-picked by the magazine's editors, *Southern Living* Inspired Communities embrace the natural beauty of the Southern landscape, display the best of *Southern Living* inspired architecture, and contain environments that foster communal gatherings. Cape Fear Station joins a handful of elite communities that hold this designation.

The neighborhood's lead builder is Whitney Blair Custom Homes, winner of the 2016 *Southern Living* Builder of the Year award. To learn more about this exciting new development at Cape Fear Station, contact Bald Head Island Limited Real Estate Sales today.



**BALD HEAD ISLAND LIMITED**  
REAL ESTATE SALES



800-888-3707 | [salesinternet@bhisland.com](mailto:salesinternet@bhisland.com) | [www.BHIREalEstate.com/InspiredCommunity](http://www.BHIREalEstate.com/InspiredCommunity)

# 212 WRITER'S WAY HOME DETAILS

Approx. 1,967 heated square feet | 3 Bedrooms, 2-1/2 Baths

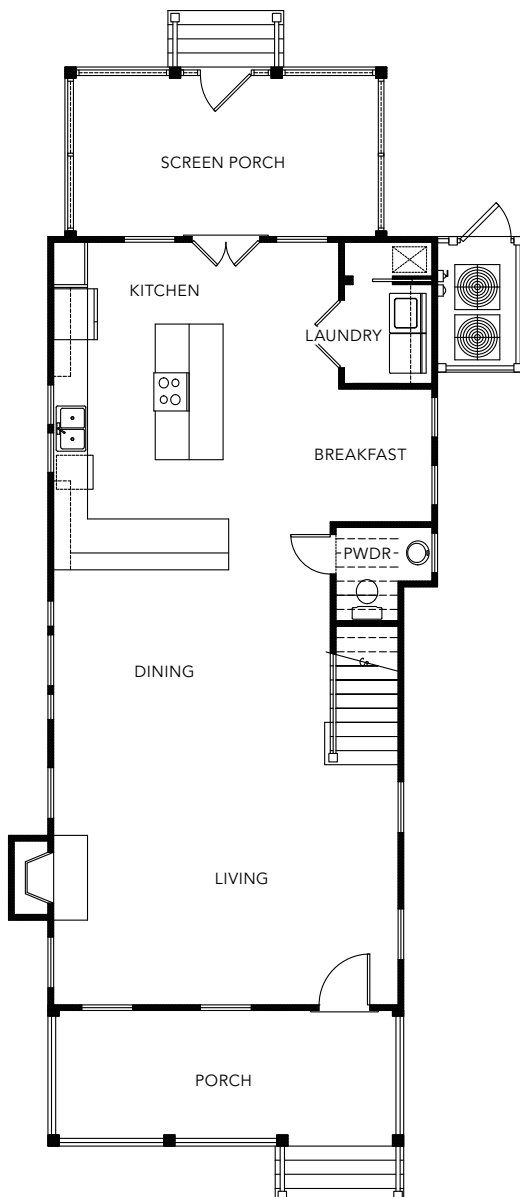
## INTERIOR

- 10' ceilings in all main living spaces on first floor, 9' on second floor
- 3 1/4" white oak, random length flooring in living room, dining room, kitchen and breakfast room, master bedroom, bedroom 2 and bedroom 3
- 8' solid core Masonite interior doors
- 1"x 8" ship-lap wainscoting in living and dining areas
- Beadboard wainscoting in powder room and laundry room
- Custom cabinetry in kitchen and all baths
- Quartz counter tops in kitchen and baths
- Designer tile in master bath floor and shower, secondary bathroom floors and tub/shower, and laundry room floor
- GE Cafe Series stainless steel appliances
- Delta plumbing fixtures in chrome in all baths
- Designer lighting throughout home

## EXTERIOR

- Hardie trim and siding
- Pella 350 Series, Low-E glass single hung windows with hurricane impact glass
- Pella exterior doors
- Aluminum standing seam metal roof
- Copper flashing
- Exposed rafter tails
- Tongue and groove porch ceilings
- Cart garage
- Outdoor shower
- Double front porch

FIRST FLOOR PLAN



SECOND FLOOR PLAN

