

Faulkner Cottage

201 PORTSMOUTH WAY



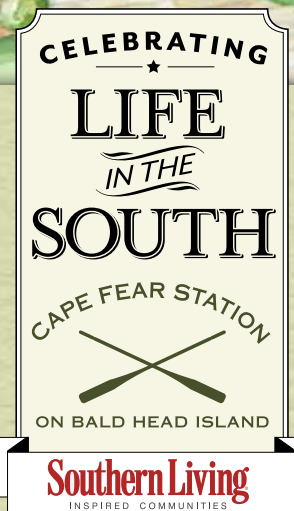
Rendering shown is for illustrative purposes only and is subject to change without notice at the discretion of the developer and/or builder.

At Cape Fear Station on Bald Head Island,

a new *Southern Living* Inspired Community is emerging. Located just a stone's throw from The Common and the Atlantic Ocean, a select group of homes designed by renowned Southern architects is now available for sale, including the beautiful Faulkner cottage at 201 Portsmouth Way.

Hand-picked by the magazine's editors, *Southern Living* Inspired Communities embrace the natural beauty of the Southern landscape, display the best of *Southern Living* inspired architecture, and contain environments that foster communal gatherings. Cape Fear Station joins a handful of elite communities that hold this designation.

The neighborhood's lead builder is Whitney Blair Custom Homes, winner of the 2016 *Southern Living* Builder of the Year award. To learn more about this exciting new development at Cape Fear Station, contact Bald Head Island Limited Real Estate Sales today.



WB WHITNEY BLAIR
CUSTOM HOMES



BALD HEAD ISLAND LIMITED
REAL ESTATE SALES



800-888-3707 | salesinternet@bhisland.com | www.BHIREalEstate.com/InspiredCommunity

201 PORTSMOUTH WAY HOME DETAILS

Approx. 2,226 heated square feet | 4 Bedrooms, Bunkroom, 3-1/2 Baths

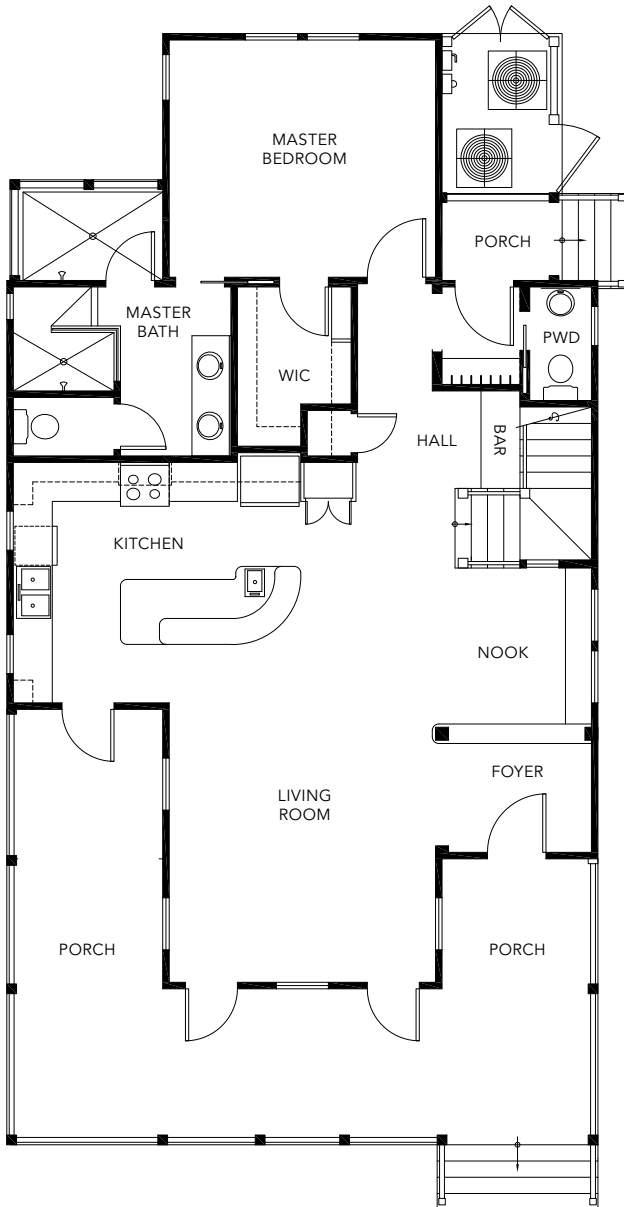
INTERIOR

- 10' ceilings on first floor, 9' on second floor, 8' solid core interior doors on both floors
- 3 1/4" random length #2 grade white oak flooring in downstairs living areas and kitchen, downstairs master bedroom, upstairs TV room and upstairs bedrooms
- Ship-lap wainscoting in living and dining rooms
- Beadboard in utility/laundry room
- Custom cabinetry in kitchen and all baths
- Quartz counter tops in kitchen and baths
- Designer tile in master bath floor and shower, secondary bath floors and tub/shower and utility/laundry room floor
- GE Cafe Series stainless steel appliances

EXTERIOR

- Hardie siding and Hardie trim
- Pella 350 Series Low-E glass single hung windows with hurricane impact glass
- Aluminum standing seam metal roof
- Copper flashing
- Exposed rafter tails
- Full wrap-around porch and a large sleeping porch
- Cart garage
- Outdoor shower

FIRST FLOOR PLAN



SECOND FLOOR PLAN

